

System **MB-SKYLINE**  
sliding door with invisible frame





The view  
above all

---

SYSTEM **MB-SKYLINE** SLIDING DOOR WITH INVISIBLE FRAME







The MB-SKYLINE sliding door system with invisible frame uses narrow profiles. This gives the construction a modern and minimalist look. Constructions fabricated with **MB-SKYLINE** have a one-of-a kind design and raise the profile of any project. They provide a comfortable, threshold-free connection of indoor and outdoor living spaces making natural environment part of users' daily experience. While the doors can be very large, their slim construction gives the impression of lightness and delicacy. The product is uniformly glazed, has slim modulations and perfectly fits into high-end construction market.

1. 71 mm (door leaf) and 190 mm-deep profiles (2-slide frame)
2. modern design and high aesthetics: the frame is concealed in the wall, in the floor and in the ceiling, the frame profile is fully aligned at the sides, the visible connection width of door leaves is 25 mm.
3. door leaves up to 500 kg and up to 4 m high
4. 3-chambered, thermally-insulated profiles
5. 52 to 60 mm-thick triple glazing units
6. door opens manually or automatically
7. drives and control units are concealed in frame profiles
8. can use an automatic unit mounted on the outside of the construction



## Technical parameters

<b>Air permeability</b>	class 3, EN 12207
<b>Watertightness</b>	up to class 9A (600Pa), EN 12208
<b>Wind load resistance</b>	up to class C5 (2000Pa), EN 12210
<b>Thermal insulation</b>	$U_w$ from 0,85 W/(m <sup>2</sup> K)*

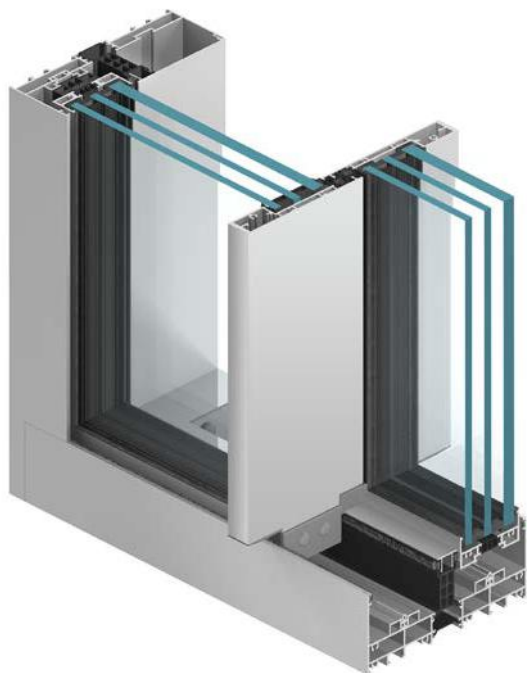
\* for door leaf: 2.07 x 3.44 m, infilled with triple glazing units  $U_g$  0.5 W/(m<sup>2</sup>K) and warm spacer



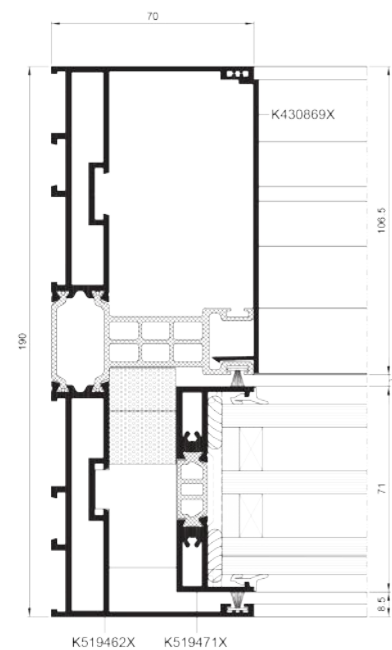


---

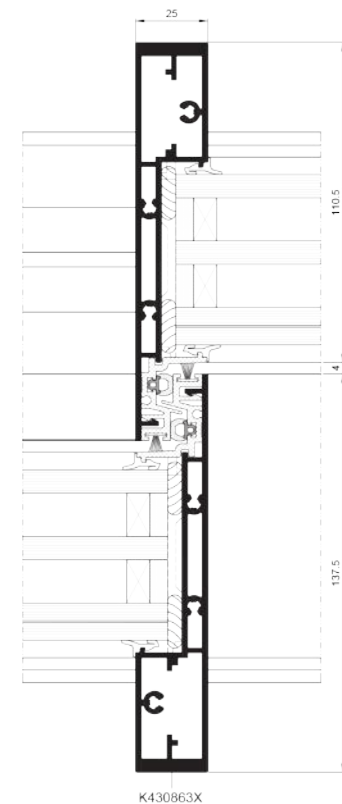
SYSTEM **MB-SKYLINE** SLIDING DOOR WITH INVISIBLE FRAME



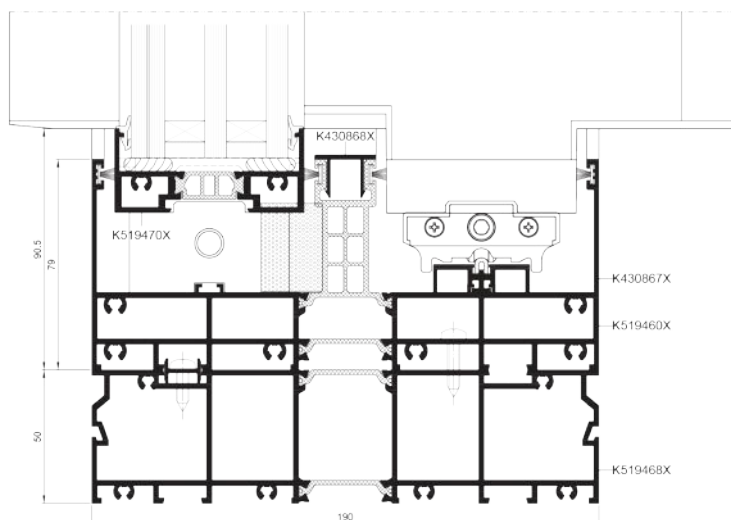
Door, side view



Door leaves connection, view



Door, bottom view





[www.home.aluprof.eu](http://www.home.aluprof.eu)

**ALUPROF S.A.** Plant in Bielsko-Biała  
ul. Warszawska 153 | 43-300 Bielsko-Biała  
tel.: +48 33 819 53 00 | fax +48 33 822 05 12 | e-mail: [info@aluprof.eu](mailto:info@aluprof.eu)

