

# IP OUT

## IMPERIAL OUT



The system Superial OUT is designed for tilt-out and turn-out windows.

# IP OUT

Window system designed for designing tilt out and turn out windows.

System Imperial OUT is fully compatible with window system Imperial (they share system elements: connectors, gaskets, glazing strips).

System Imperial OUT features faced internal surface of the frame and the sash.

Turn out windows can be fitted with two types of hinges: rotating hinges or scissor hinge; window hardware used allows tilting the top or the bottom of the window outwards; option of turn out window with the limit stop.

Available option of integrating windows with walls by using reversing profile.

Option of bending profiles (detailed specification of profiles and detailed technical parameters of profile bending process are available in the customer area of the website [www.aliplast.pl](http://www.aliplast.pl)).

Maximum dimensions and weights of structures in Imperial OUT system:

- *tilt out windows* - minimum width and height of sash 500 mm, maximum width and height of sash 2000 mm, maximum weight of sash 100 kg for tilt out windows
- *turn out windows* - minimum width and height of sash 500 mm, maximum width of sash 1500 mm, height of sash 3000 mm, maximum weight of sash 120 kg for turn out windows

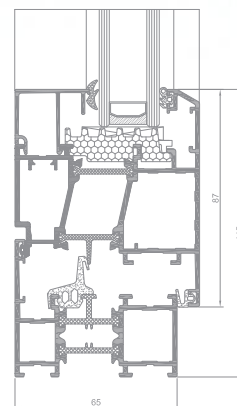
System IP OUT is available in the variant with improved thermal insulation power. Available options:

- *IP OUT i* with additional thermal insulation, at the profile-glass interface;
- *IP OUT i+* with additional thermal insulation between thermal spacers.

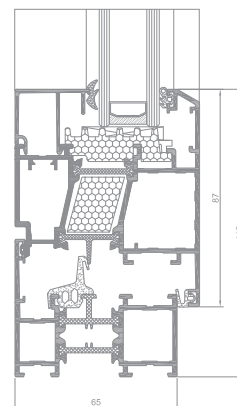
This system is very popular in Nordic countries and on British Isles. Perfectly matching old and stylized manor houses, wood cabins or simple Scandinavian type houses. Shutters are often used with such windows.

There is possibility of use Flyscreen system (Flyscreen – fly screens are a practical and an extremely functional protection against insects).

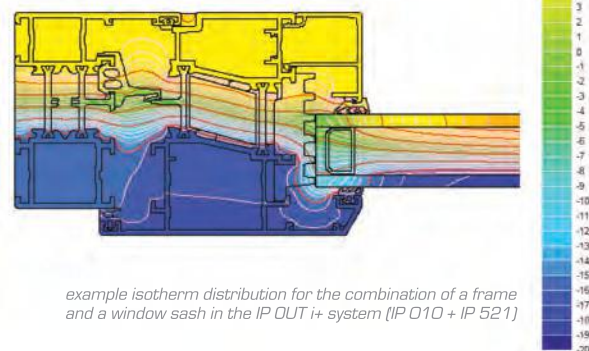
A wide range of colours available - RAL palette, structural colours, Aliplast Wood Colour Effect, bi-colour.



IP OUT i window section



IP OUT i+ window section



example isotherm distribution for the combination of a frame and a window sash in the IP OUT i+ system (IP 010 + IP 521)

## TECHNICAL SPECIFICATION

| SYSTEM    | MATERIAL             | DEPTH OF FRAME | DEPTH OF LEAF | GLAZING RANGE | TYPE OD WINDOWS | TYPE OF DOORS |
|-----------|----------------------|----------------|---------------|---------------|-----------------|---------------|
| IP OUT    | aluminium / polyamid | 65 mm          | 74 mm         | max 61 mm     | outward opening | _____         |
| IP OUT i+ | aluminium / polyamid | 65 mm          | 74 mm         | max 61 mm     | outward opening | _____         |

## PERFORMANCE

| SYSTEM    | THERMAL INSULATION Uf *         | AIR PERMEABILITY  | WINDLOAD RESISTANCE   | WATERTIGHTNESS       |
|-----------|---------------------------------|-------------------|-----------------------|----------------------|
| IP OUT    | Uf from 1,85 W/m <sup>2</sup> K | Class 4; EN 12207 | Class C5/B5; EN 12210 | Class E900; EN 12208 |
| IP OUT i+ | Uf from 1,68 W/m <sup>2</sup> K | Class 4; EN 12207 | Class C5/B5; EN 12210 | Class E900; EN 12208 |

\* Thermal insulation is dependent on a combination of profiles and thickness of the filling.