

# The Schueco Contemporary Living Collection of windows, sliding doors and façades





- 4 The Schueco Contemporary Living Collection
- 6 Schueco the company
- 10 Sliding and folding doors
- 18 Entrance doors
- 20 Windows and balustrades
- 22 Façades
- 26 Security and automation
- 28 Insulation
- 30 Handles, colours and finishes
- 33 System matrix

# The Schueco Contemporary Living Collection of windows, sliding doors and façades



When it comes to our homes, we are all of us writing our own story. Because the house we live in and the way we live contribute to our sense of well-being and personal fulfilment.

And while – quite naturally – we want to add value to our property, we also want to feel that we are doing our best to live sustainably and to pass on a better world to the next generation.

Which is why The Schueco Contemporary Living Collection was created.

The Collection contains a carefully selected range of precision-engineered, made-to-measure aluminium products in which quality, form and functionality combine to produce the perfect solution to meet your needs.



What's more, the huge variety of design options ensures that there'll be a system that will meet your requirements exactly.

As you look through this brochure, notice the crisp, clean lines of the Schueco systems, the elegant slim profiles and the large areas of clear glass. Note too the attention to building security and the excellent insulation values that mean greater comfort and lower fuel bills.

It's details like these that let you know you're investing, not just spending.



## Schueco. World-leader in architectural aluminium systems



Albion Riverside, London, designed by international architect Foster + Partners and featuring Schueco systems

The systems we produce for the residential market are only one part of our business. Founded in Bielefeld, Germany, in 1951, we are a global company responsible for the aluminium façades, windows and doors on many of the world's most prestigious buildings.

We are proud of our reputation for unrivalled engineering, system design and customer

service that has made us the company of choice for top architects and designers the world over.

And you'll find these same qualities in The Schueco Contemporary Living Collection. That's because, whatever the size of the project, we devote the same care and attention to ensuring our products fully satisfy the demands of our customers.

Doors that open easily; windows that shut tightly; façades that take your breath away. And being aluminium they'll never need painting, only minimal maintenance – and eventually, at the end of their long, long life, they can be completely recycled.

It's a responsible attitude from a responsible company that cares about our shared future.

# Schueco: style that lasts

Everybody expects and enjoys choice and with Schueco, choice is always a given. As are the precise contours and contemporary design of our systems.

But some other benefits only become apparent over time. Like the premium quality of our aluminium profiles. Like the excellence of our engineering. Like the fact that true value is never just about price but about style that lasts.



# Expand your horizons with Schueco sliding doors



Let a Schueco sliding door bring light into your life



A Schueco highly-insulated sliding door means maximum comfort



Schueco sliding doors without a corner post open up even more space



Slide a Schueco door open to enjoy more than the view



A Schueco lift-slide door has a low threshold

The moment you open a Schueco sliding door – whether it’s a straight slide or lift-slide – the solid feel of the frame and the easy-glide action make it clear you’re dealing with quality.

But you may have to wait for a chilly autumn evening before you appreciate how its superb insulation – which minimises heat loss and noise from outside – can leave you feeling so snug and warm.

Add in low thresholds that prevent tripping but still keep out the rain and the slim sight-lines that maximise the glazed areas and you know you’re making the right choice.

And if security is worrying you, it needn’t. Multi-point locking means that excellent burglar-resistance comes built-in.



## Enjoy your views with Schueco panoramic sliding doors



A panoramic sliding door lets you see the bigger picture

What's the best way to bring a house to life?  
Answer: flood it with light.

Which is exactly what a Schueco panoramic sliding door allows you to do. A very slim central interlock and a completely concealed outer frame maximise the glazed areas and the views beyond them.

Designed to accommodate very wide spans, every panoramic door includes hard-wearing integral rollers concealed within the profile of each leaf. This allows the leaves to run easily despite being very large. A low-noise motorised version is also available.

With access made particularly safe by a threshold which lies completely flush, these beautiful sliding doors are as functional and secure as they are stylish.



Panoramic sliding doors are your window on the world



A completely open corner allows a clear view

# Open up your world with Schueco folding doors



Enjoy a fabulous open air experience

Everyone loves being in the open air when the sun shines.

And when you install one of Schueco's folding/sliding doors – which allow a clear opening of as much as 95% – you can enjoy that sensation *inside* as well as *outside* your home, all day long.

It's a fabulous, liberating feeling.

Which is reinforced by the design options available: you can specify not only the colour (and there are plenty to choose from), but also whether the leaves glide inwards or outwards to stack.

Every folding door is thermally insulated with close-fitting, weather-tight gaskets to eliminate draughts. Precision-made rollers and a top guide mean that even a door system with multiple leaves is easy to operate.

In addition, being highly engineered and equipped with a multi-point locking mechanism, a Schueco folding door is exceptionally strong and dependably secure, despite its elegantly slim frames and narrow face-widths.



Without a corner post you can open up your entire patio



Have complete access to your terrace







## Welcome your guests with Schueco entrance doors



Customise your Schueco entrance door with stylish infill panels

When you visit someone's home, the front door is something you tend to use and forget. Yet its several active roles – as a barrier against the weather, as a guarantor of our security, as an indicator of our taste in design – make it an important feature.

Fortunately, The Schueco Contemporary Living Collection offers a choice of entrance doors that are as decorative as they are weather-tight and as thermally efficient as they are secure.

For additional functionality, an entrance door may be fitted with a Schueco DCS electronic door management system. Presented in a sleek, black glass panel, this enables keyless access by means of a numeric keypad or biometric fingerprint recognition.

In short, a Schueco door is a perfect union of form and function, meeting the highest standards of design and comfort.



Some of the design options available to you



Keyless security access



## Define your outlook with Schueco windows



Perfectly proportioned windows enhance architectural brilliance



Every window makes a statement

We all know how important windows are to the look of a home and with The Schueco Contemporary Living Collection, it's never been easier to get these right.

With so many types – inward-opening, outward-opening, side-hung, top-hung, tilt-turn or fixed light – there'll always be a window to meet your needs. And it will offer excellent 'U' values, a smooth operation and tight, draught-proof weather-seals.

What's more, to get a sophisticated continental look, why not opt for metal balustrades or glass safety barriers?

And if you're concerned about the environment, you may be pleasantly surprised to hear that natural raw materials such as the castor-oil plant and sugar cane form the basis of some of the components in our super-insulated Green Window.

That's sustainability in action.



Form meets function, perfectly

## Light up your life with a Schueco façade



Narrow face-widths and a glass-to-glass corner: only a Schueco façade can offer this level of sophistication

As components in a building, aluminium and glass complement each other perfectly.

They are the ideal materials for creating the pared-back, modernist look favoured by high-achievers in today's frenetic, 24/7 world.

Yet paradoxically, they can also provide a calm space in which to sit back, relax and take stock.

Wherever it is located, a Schueco façade will look stunning. Its 35 mm face-width – the narrowest on the market – gives it unmistakable style. The many different versions available give it unbeatable versatility.

A unique glass-to-glass corner option maximises the transparent nature of the façade, while a super-insulated version achieves the highest Passive House level of certification.

This means you can enjoy the drama of large-scale clear glazing, while still staying warm and comfortable on cold winter days.



A stylish and contemporary look, courtesy of Schueco



Schueco highly-insulated façades are just one design option

## Make your home your own



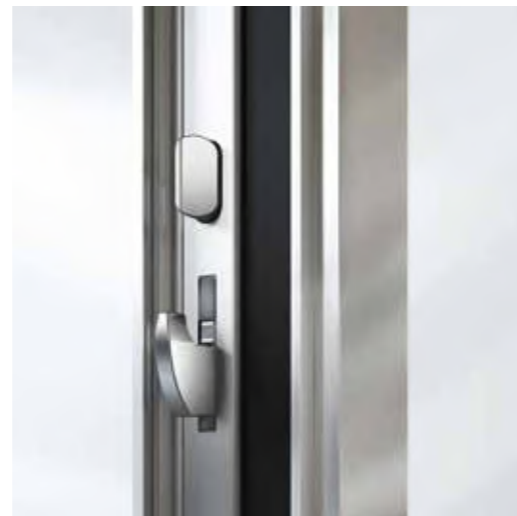
When you're improving your home, you need to look at the details: those things that you sometimes take for granted, but which often make the difference between a good choice and the best choice.

Over the next few pages, we'd like to show you how committed we are to getting those details right.

## Safe and secure with Schueco



Schueco SafeMatic lock offers convenience and security



Multi-point locking: the ultimate security option



Slim-line barrel hinges with concealed fixings merge seamlessly into the profile



Completely concealed door hinges also offer excellent weather protection

Today's world is anything but certain, so one of our priorities is to ensure that your home always feels safe and secure.

For instance, all our systems have been tested to meet rigorous European and/or UK standards for burglar resistance. And since external glazing beads are the easiest way to effect a forced entry, ours are always located on the inside.

Then there's our SafeMatic 5-point lock for entrance doors which locks automatically thanks to special latches that act as primed bolts when the door is pulled to.

And talking of locks, we've enough different types to allow you to set the level of home security you're comfortable with: basic or advanced? Mortice or multi-point? The choice is yours!

## Automate your home with Schueco



No more stretching to open fanlights



Automation at the touch of a button



Smartphone app enables keyless entry



Schueco BlueCon unlocks the door automatically from a distance of 4 metres

The ultimate in domestic luxury, Schueco's TipTronic mechatronic window opening system is an option you may find hard to resist.

The unit is concealed in the frame and may be activated either by a multi-function push-button on the handle, a wall-mounted switch or a remote controller.

Suitable for all opening windows, Schueco TipTronic is particularly useful for hard-to-reach units such as fanlights.

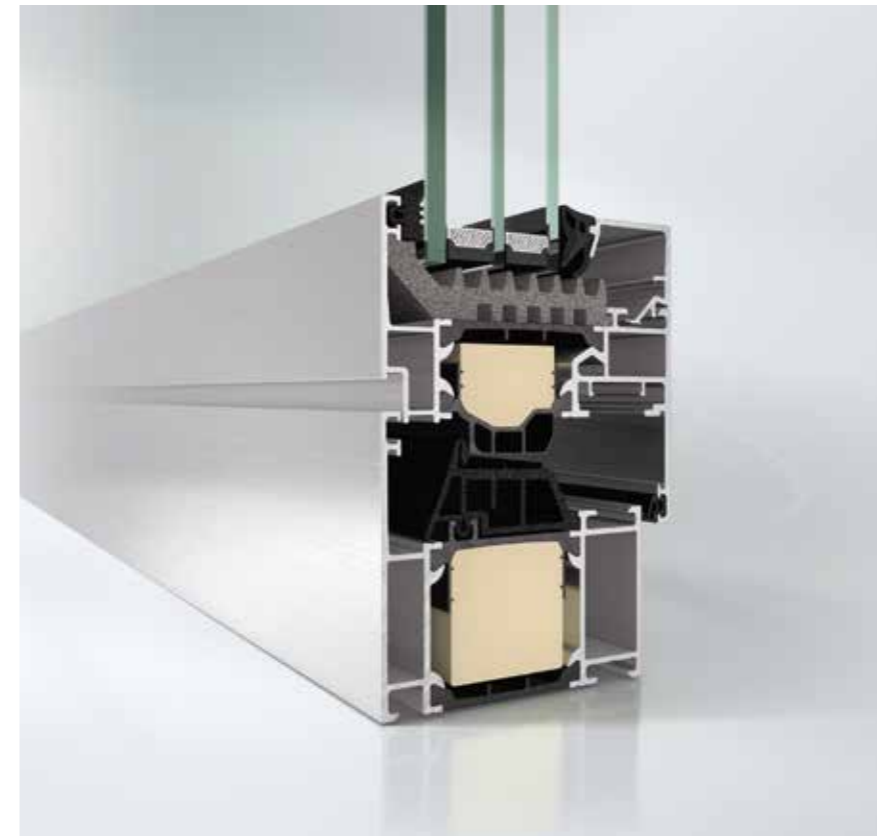
For entrance doors, the Schueco BlueCon access control module has all the answers. A Smartphone app (downloadable from Android or iOS), enables complete keyless operation, activating the door lock when the user is 4 metres away.

It can also be programmed to enable entry by children, cleaners and similar users.

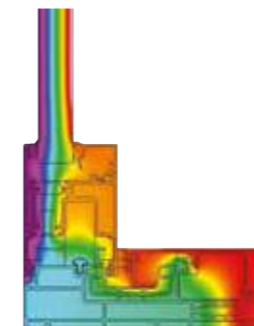
# Ensure your comfort with Schueco insulation



Excellent thermal insulation means you'll always stay warm when it's cold outside



The super-insulated Schueco AWS 75.SI\* window with triple-glazing



All Schueco systems have high levels of thermal insulation built in

With so much heat routinely lost through windows and doors, it's reassuring to know that a Schueco system conserves heat the moment it's been installed.

Double- or triple-glazing combined with years of pioneering research have led to levels of thermal insulation and an absence of draughts that mean you stay warm whatever the weather.

And this not only means greater comfort and lower fuel bills, it also allows your home to do its bit for the environment by cutting the levels of CO<sub>2</sub>.



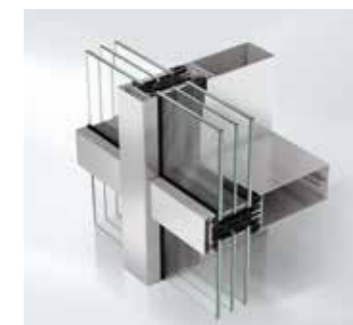
Schueco ASS 70.HI sliding door



Schueco ASS 80 FD.HI folding door with triple-glazing



Schueco ADS 75.SI entrance door



Schueco FW 50\*.SI façade

## Design-in your style with Schueco handles



Minimalist design and a range of finishes give Schueco handles for windows and sliding doors their timeless appeal



You can always tell when a window or a door has been well designed because the handle makes its own contribution. No longer simply a functional object, it works as a design statement adding its own elegance and class.

Designed especially for Schueco, our handles look beautiful, feel reassuringly solid in the hand and function superbly – as you might expect from a range which has won a prestigious iF Product Design Award.

Some incorporate integral key-operated locks, some are simply ergonomic with timeless visual appeal; but whichever handle you choose, you'll be investing in a product that's been engineered to last.

Just one of a wide range of Schueco door handles

## Indulge your senses with Schueco colours and finishes

When you select the colours for your home, you're telling people something about yourself. So it's actually important that you're given a really wide palette to choose from.

That's where Schueco scores because we are able to offer as comprehensive a range of colours as it's possible to have. And because they're polyester powder coat colours, they're hard-wearing and fade-resistant and will continue to look good year after year.

And you can even choose one colour for the inside of the frame and another colour for the outside, ensuring that everything matches perfectly.

In addition, there's a range of surface finishes and textures that allow you to add yet another dash of individuality.

Overall, we think that this is one area in which you'll find yourself spoiled for choice\*. But isn't spoiling what we all need sometimes?

\* Ask your installer about availability.



Real choice from the Schueco range of colours and finishes



# Make your choice

| Page Nos                       | System Name              | U Value                                  | Db rating | Choice of Finishes | Choice of Colours | Choice of Handles | Automation |
|--------------------------------|--------------------------|--|-----------|--------------------|-------------------|-------------------|------------|
| <b>Sliding Doors</b>           |                          |  |           |                    |                   |                   |            |
| 10 - 11                        | ASE 60                   | 1.0                                      | 41        | ■                  | ■                 | ■                 |            |
|                                | ASE 80.HI                | 0.80                                     | 45        | ■                  | ■                 | ■                 |            |
|                                | ASS 50                   | 2.0                                      | 40        | ■                  | ■                 | ■                 |            |
|                                | ASS 70.HI                | 1.3                                      | 44        | ■                  | ■                 | ■                 |            |
|                                | ASS 70.HI Design Edition | 1.3                                      | 43        | ■                  | ■                 | ■                 |            |
| <b>Panoramic Sliding Doors</b> |                          |  |           |                    |                   |                   |            |
| 12 - 13                        | ASE 67 PD                | 1.0                                      | 46        | ■                  | ■                 | ■                 |            |
|                                | ASS 77 PD                | 1.0                                      | 42        | ■                  | ■                 | ■                 | ■          |
|                                | ASS 77 PD Manual         | 1.0                                      | 42        | ■                  | ■                 | ■                 |            |
| <b>Folding Doors</b>           |                          |  |           |                    |                   |                   |            |
| 14 - 15                        | ASS 70 FD.HI             | 1.3                                      | 44        | ■                  | ■                 | ■                 |            |
|                                | ASS 70 FD                | 1.4                                      | 44        | ■                  | ■                 | ■                 |            |
|                                | ASS 80 FD.HI             | 0.30                                     | 47        | ■                  | ■                 | ■                 |            |
| <b>Entrance Doors</b>          |                          |  |           |                    |                   |                   |            |
| 18 - 19                        | ADS 70.HI                | 1.7 U <sub>f</sub>                       | 43        | ■                  | ■                 | ■                 |            |
|                                | ADS 75.HI                | 1.6 U <sub>f</sub>                       | 43        | ■                  | ■                 | ■                 |            |
|                                | ADS 90.SI                | 1.2 U <sub>f</sub> , 0.80 U <sub>d</sub> |           | ■                  | ■                 | ■                 |            |
| <b>Windows</b>                 |                          |  |           |                    |                   |                   |            |
| 20 - 21                        | AWS 70 SC                | 1.4                                      |           | ■                  | ■                 | ■                 |            |
|                                | AWS 70.HI                | 1.5 U <sub>f</sub>                       | 48        | ■                  | ■                 | ■                 |            |
|                                | AWS 90.SI Green          | 0.80                                     | 47        | ■                  | ■                 | ■                 |            |
| <b>Façades</b>                 |                          |  |           |                    |                   |                   |            |
| 22 - 23                        | FWS 35 PD                | 0.80                                     | 49        | ■                  | ■                 |                   |            |
|                                | FWS 50                   |  | 48        | ■                  | ■                 |                   |            |
|                                | FWS 60 CV                | 0.86                                     | 48        | ■                  | ■                 |                   | ■          |

Typical U values based on insulating glass U value of 1.0 W/m<sup>2</sup>K and warm edge spacer (triple-glazing U value 0.80 W/m<sup>2</sup>K)

## Plus a service that's second to none

Finally, it's important to mention that when you buy a Schueco system, you are also buying an expert installation service.

Schueco's nationwide network of highly trained partner companies means that you can be sure that the quality of the installation will fully match the quality of the systems.

Professional to their fingertips, Schueco Partners are able to meet your needs, drawing on many years of experience and acquired technical expertise to achieve the level of perfection you expect.

## Windows, Sliding Doors and Façades



We very much hope that you have enjoyed reading this brochure.

We are proud of the products contained in The Schueco Contemporary Living Collection, all of which have been designed to go on performing, with only minimal maintenance, year after year. And remember, whatever Schueco system you're buying – whether it's a window, door or façade – you can be sure that you're buying the best.

The best in terms of quality, the best in terms of design, the best in terms of insulation, the best in terms of service. It's what our reputation and our business have been built on.

**Schueco UK Ltd**  
www.schueco.co.uk

### Schueco – System solutions for windows, doors and façades.

Based in Bielefeld, the Schueco Group develops and sells system solutions for windows, doors and façades. With more than 4,900 employees worldwide, the company strives to be the industry leader in terms of technology and service today and in the future. In addition to innovative products for residential and commercial buildings, the building envelope specialist offers consultation and digital solutions for all phases of a building project – from the initial idea through to design, fabrication and installation. 12,000 fabricators, developers, architects and investors around the world work together with Schueco. The company is active in more than 80 countries and achieved a turnover of 1.575 billion euros in 2017.

For more information, visit [www.schueco.com](http://www.schueco.com)

# SCHÜCO