

decco[®]
E X T R U S I O N

www.decco.eu

7 chambers
Profile with an 81 mm width

Decco 83



Decco 83 is a profile with extreme thermal parameters.
The third gasket and wide glazing units
with a warm frame provide parameters
not guaranteed by other profiles.

0,59 U_w ^{*}
 W/m^2K

+ Reference window width 1230 mm, height 1480 mm with a glazing unit
4/12/4/12/4/12/4 kryp. o Ug=0.3 W/m²*K with a SWISSPACER ULTIMATE frame.

decco®
E X T R U S I O N

www.decco.eu

Decco 83 profile is a profile with extreme thermal parameters. The third gasket and wide glazing units with a warm frame make this profile unrivalled on the market.

- 7-chamber system with an installation width of 81 mm, with a third, central gasket

- The applicability of many types of glazing units with a thickness of 23 mm to 54.8 mm!

- Seals in gray or black

- A wide range of decorative foils

- Extended reinforcement chambers, increasing the rigidity of the windows and allowing the production of all properly designed structures

- The offer includes three core colors: white, caramel, and dark brown

- Contains transition profiles for large sliding and balcony doors

- The optimum height of the assembly of the profiles which gives up to 5% more light compared to other systems in its class (two-wing windows with width of 1465 mm, height of 1435 mm)

- Excellent thermal insulation: $U_w = 0.59 \text{ W/m}^2\text{K}$ of the reference window with width 1230 mm, height 1480, with 52 mm glazing unit 4/12/4/12/4/12/4 kryp. o $U_g = 0.3 \text{ W/m}^2\text{K}$ with SWISSPACER ULTIMATE frame and a thermal pad in the frame.

- The production technology prepared jointly by the engineers from Decco, and from the world leader in the manufacture of tools, Greiner

- In this system, it is possible to use glued glazing technology, which increases the stability of windows and allows for larger constructions

- The possibility of the use of thermal pads

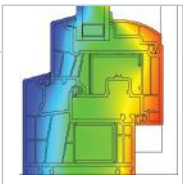


2-glass package 4/46/4
24 mm Ug 1,0/Wm²K

SWISSPACER V spacer bar, argon



Uw=1,1 W/m²K



Thermal permeability of reference window width 1,230 mm height 1,480 mm

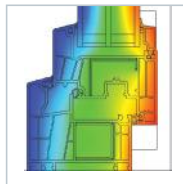
3-glass package 4/18/4/18/4
48 mm Ug 0,5/Wm²K

SWISSPACER V spacer bar, argon



Decco 83 System core available in 3 colors: white, caramel and dark brown, so that it always matches the color of veneers

Uw=0,72 W/m²K



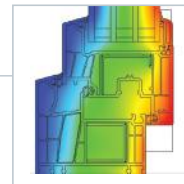
Thermal permeability of reference window width 1,230 mm height 1,480 mm

4-glass package 4/12/4/12/4/12/4

52 mm Ug 0,3/Wm²K
SWISSPACER ULTIMATE spacer bar, krypton



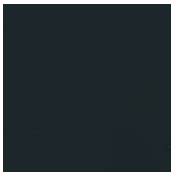
Uw=0,59 W/m²K



Thermal permeability of reference window width 1,230 mm height 1,480 mm

Profile available in a wide range of colour and wood-imitating veneers

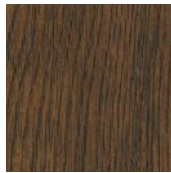
STANDARD



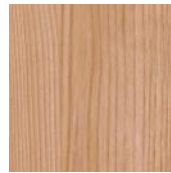
Coal Grey 5003



Golden Oak 08



Nut 05



Polish Pine 68



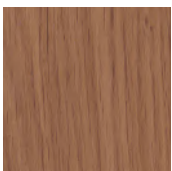
Wine Red 3005



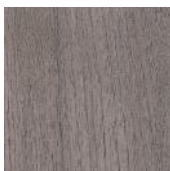
Brilliant Blue 5007

And many others

PREMIUM



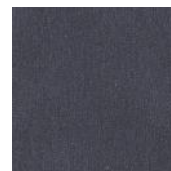
Winchester 76



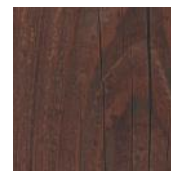
AnTeak 3241



Anique Pine 84



Crown Platinum 3001



Smoke Pine 82



Vintage Pine 85