

Door and window system

# MB-70

The Aluprof **MB-70** is a high performance and fully integrated window and door system. Due to the specially designed polyamide break and extruded gaskets that are incorporated into the aluminum profile it offers excellent thermal insulation performance with the  $U_f$  rate from  $1,0 \text{ W}/(\text{m}^2\text{K})$  and reduced noise properties. The range perfectly suites with Aluprof 's curtain walling and framing products and is appropriate for installation in low and high rise buildings for new buildings and refurbishment projects.

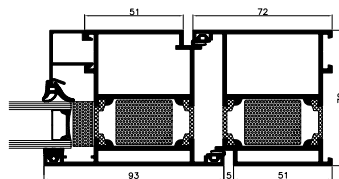
▪ *Flexibility of design*

▪ *Thermal insulation:  $U_f$  from  $1,0 \text{ W}/(\text{m}^2\text{K})$*

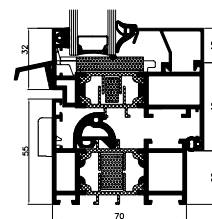
**RECOMMENDED  
FOR ENERGY-EFFICIENT  
CONSTRUCTIONS**



## MB-70 / MB-70 HI



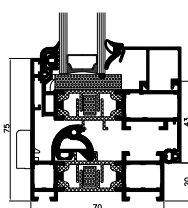
Door – cross-section MB-70 HI



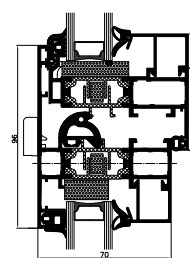
Window – cross-section MB-70 HI

The basic range of profiles allows the manufacturing of windows that open inwards and outwards. Thanks to its construction, it allows the use of many types of turn, tilt, turn-and-tilt and tilt-and-slide fittings as well as folding constructions. As regards doors, we have at our disposal the conventional single- or double-leaf doors as well as doors with the so-called safe doorstop. The system is also used for making bigger showcase structures using reinforcing profiles when required. It is also the basis for a number of interesting individual solutions.

## MB-70US / MB-70US HI



Opening window – cross-section

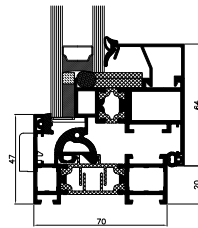


Opening window and fixed window – cross-section

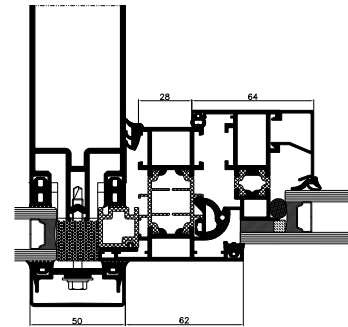
The invisible window sash variety. It enables an effect of indifferent look of series of neighboring combination of fixed and opening windows from the outside of the building. It gives an impression of light and neat look since low width of frames seen from the outside. Available in both regular and HI variety with enhanced thermal insulation.

WINDOW DIAGRAMS	SECTION A OR B	U <sub>w</sub> value W/(m <sup>2</sup> K)			
		Glass pane with Chromatech Ultra frame			
		Double-chamber		Single-chamber	
		U <sub>g</sub> =0,5	U <sub>g</sub> =0,7	U <sub>g</sub> =1,0	
	MB-70HI	 K518101X	0,8	1,0	1,2
		 K518101X + K518111X	1,0	1,1	1,3
		 K518101X + K518112X	1,0	1,1	1,3
		 K518102X + K518112X	1,0	1,1	1,3

## MB-70SG



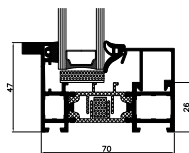
Opening window – cross-section



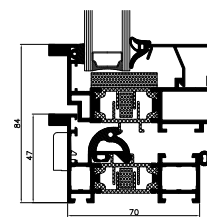
Active window  
in a curtain wall – cross-section

The variety of system that enables to make window with sash invisible from the outer space. It resembles regular concealed sash construction but since its frame features 47 mm width it is therefore narrower than MB-70US and offers slimmer and lighter look.

## MB-70 INDUSTRIAL / MB-70 INDUSTRIAL HI



Fixed window – cross-section



Opening window – cross-section

Whether for renovating old steel windows or giving a stylish steel look to newbuild, the MB-70 Industrial enables to keep with the original style, providing all the benefits of modern aluminum technology. Combining attractive design options with long term reliability, the system also features enhanced thermal insulation properties to ensure energy conservation.

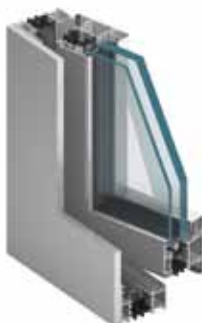
## MB-70 Casement



## MB-70 Pivot



## MB-70RC4



## MB-70CW / MB-70CW HI



The MB-70 system can be used for fabrication of the outward openable windows MB-70 Casement / MB-70HI Casement, pivot windows MB-70 Pivot, burglar proof windows including a special version of the MB-70 RC4 in class RC4, and window façade MB-70CW / MB-70CW HI. For more information, please refer to our publications for architects or contact our technical consultants.

## FEATURES AND BENEFITS

- windows available as fixed or open in, tilt and turn, tilt and slide
- 1 or 2 leaf doors open in or open out
- safety locking
- steel look like industrial options
- large size door constructions available
- hidden sash option
- secure windows and door options, providing burglar resistance
- multitude of finish options
- dual color options
- glazing up to 60 mm
- multi-point locking
- Eurogroove that broadens the choice of hardware available
- suites with other Aluprof's MB systems allowing total design flexibility and project solutions
- compliance with CE marking requirements

TECHNICAL SPECIFICATION	MB-70 MB-70 HI	MB-70US MB-70US HI	MB-70 INDUSTRIAL MB-70 INDUSTRIAL HI	MB-70SG	MB-70CW MB-70CW HI
Depth of frame (door / window)	70 mm / 70 mm	70 mm			
Depth of leaf (door / window)	70 mm / 79 mm	79 mm			
Glazing rang (fixed window and door / opening window)	15 – 51 mm / 23 – 62 mm	9 – 45 mm / 18 – 54 mm	15 – 51 mm / 23 – 62 mm	18 – 54 mm	9 – 45 mm / 18 – 54 mm
MIN VISIBLE WIDTH T-PROFILE					
Frame (door / window)	51 mm / 47 mm	75 mm	47 mm	47 mm	78,5 mm
Leaf (door / window)	72 mm / 32 mm	–	32 mm	–	34,6 mm
SIZE AND WEIGHT LIMITATIONS					
Maximum size of window (H×W)	H to 2400 mm W to 1600 mm	H to 2100 mm W to 1400 mm	–	H to 2400 mm W to 2000 mm	–
Maximum size of door (H×W)	H to 2400 mm W to 1300 mm	–	–	–	–
Max weight (door / window)	120 kg / 130 kg	130 kg	–	130 kg	–
TYPES OF CONSTRUCTIONS					
Solutions	Tilt window, turn window, tilt&turn window, doors open in and open out	Fixed window, tilt window, turn window, tilt&turn window	Fixed window, tilt&turn window	Turn window, tilt window, tilt&turn window	Fixed window, tilt&turn window

PERFORMANCE	MB-70 MB-70 HI	MB-70US MB-70US HI	MB-70 INDUSTRIAL MB-70 INDUSTRIAL HI	MB-70SG	MB-70CW MB-70CW HI
Air Permeability	class 4, EN 1026:2001; EN 12207:2001				–
Windload resistance	to class C5, EN 12211:2001; EN 12210:2001			class C5, EN 12211:2001; EN 12210:2001	
Watertightness	to class E1200, EN 1027:2001; EN 12208:2001			E750, EN 1027:2001; EN 12208:2001	
Thermal insulation (U <sub>f</sub> )	from 1,0 W/(m <sup>2</sup> K)	from 1,5 W/(m <sup>2</sup> K)	from 1,9 W/(m <sup>2</sup> K)	from 2,2 W/(m <sup>2</sup> K)	from 1,4 W/(m <sup>2</sup> K)