

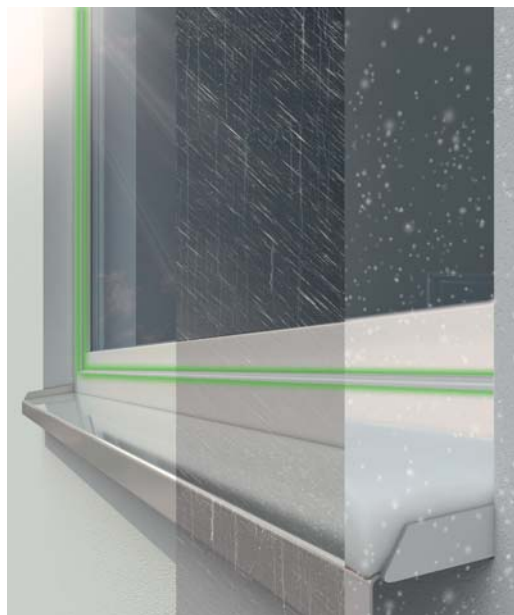
My choice.  
Schüco windows.  
Schüco Living.  
Designed to meet my expectations.



SCHÜCO

# Schüco LivIng – good mood thanks to the windows

Modern plastic windows can last up to 30 years in good condition. That is why it is so important that all their components, such as gaskets, are equally durable. These elements largely determine whether the window properly performs all its functions. In the case of Schüco LivIng windows even the smallest details are the best quality. They use high-class gaskets made of EPDM - the best material, which thanks to its excellent properties is used, among others, in medicine, aviation and the automotive industry.

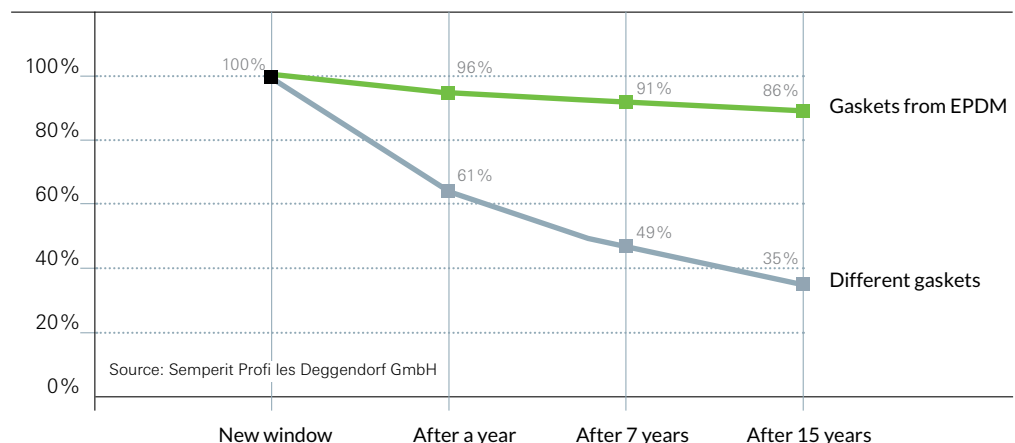


## Best quality in every detail

High requirements in terms of tightness, long-term functionality and protection against weather conditions also apply to window gaskets. The best material, proven in over 50 years of practice, is synthetic EPDM rubber. Gaskets made of this material show an excellent ability to so-called Elastic return\*, guaranteeing the tightness of the windows throughout the service life. The time-consuming and expensive replacement of window gaskets is not necessary in this case.

Schüco LivIng windows use the latest EPDM sealing technology, which ensures complete tightness of the window even in the critical corner zone. It is, above all, full comfort and well-being at home.

The comparison of the ability for elastic return\* of Schüco gaskets with EPDM and other gaskets clearly shows that the high-quality material keeps high flexibility for a long time, and thereby has positive properties in terms of protection against drafts, cold, moisture and noise. A gasket made of a different material loses its elasticity in the first years of use and gradually becomes more and more fragile and brittle. After about 7 years, its tightness drops by about 50%.



\* The work of the gasket under the influence of repeated deformation, e.g. when opening and closing a window. It is desirable to return to its original shape as much as possible. Only this kind of work of the gasket ensures long-term high tightness of the window.

Thanks to Schüco LivIng windows, your home will be better protected against drafts, noise, moisture and cold for decades. A cozy house is a new quality of life.



### An oasis of calmness and silence

Thanks to Schüco LivIng windows, tiring noise will not disturb your peace anymore. The system of plastic windows and the innovative technology of EPDM gaskets in conjunction with panes protecting against noise provide excellent acoustic insulation up to 47 dB. You will finally feel comfortable within your own four walls, because stress caused by the noise from the street where you live, your neighbors' lawnmower, from the construction site around the corner or the nearby airport, is a thing of the past.

### Automatic ventilation

No more stuffy rooms or the formation of mold due to insufficient ventilation. Schüco LivIng windows ensure automatic air exchange thanks to three solutions: Schüco VentoPlus, Schüco VentoAir or Schüco VentoAir+. The Schüco VentoPlus ventilator, harmoniously integrated with the window, is activated depending on the needs, thanks to the built-in moisture sensors. Hidden Schüco VentoAir and VentoAir+ ventilators change the air when necessary. Thanks to them, drafts or irritating noises from the outside are forgotten.

Schüco VentoAir



Schüco VentoAir+



Schüco VentoPlus

# Schüco LivIng – sense of safety

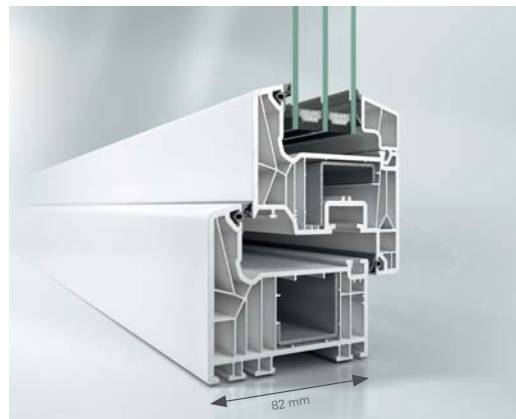
In order to feel good and confident at any time, it is worth investing in your own safety. Schüco LivIng windows are offered with the most modern fitting systems and a variety of equipment options that can be selected depending on personal preferences in terms of security.



**Under protection for all day**

Schüco Living windows allow you to significantly increase the sense of security, because the advanced technologies used in them make life difficult for burglars. High resistance, which is characterized by high-impact PVC-U, increased installation depth and deep-seated fittings make

Schüco Living windows difficult to beat. Thanks to modern steel fittings with mushroom interlocks, it has become almost impossible to overcome the window barrier. Hardened components and lockable handles with a key or the button make attempts to drill through and moving the fitting ineffective.



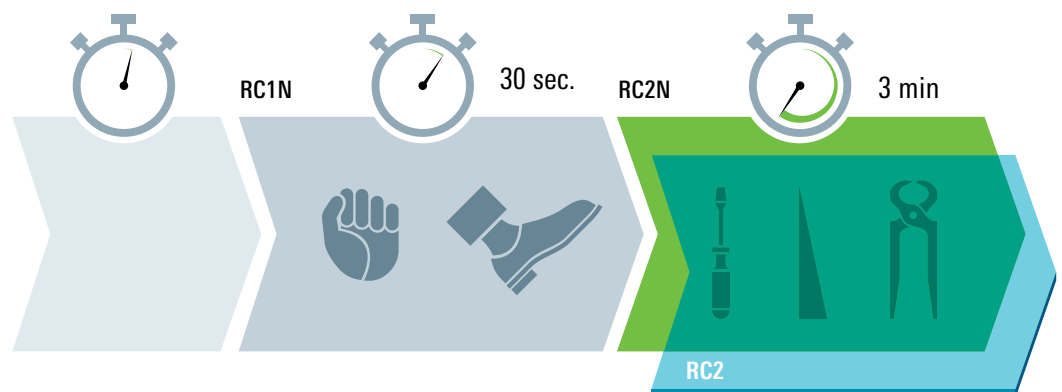
Good basic security: increased installation depth and deep-seated fittings provide better protection against burglary



Lockable handles provide a higher standard of security

**Anti-burglary protection as required**

The degree of anti-burglary protection provided by windows is indicated by the burglary resistance classes (RC), defined in European standards. On the basis of legally regulated anti-burglary classes, it was determined how long a given window or door resists attempts of force with the use of various tools. Practice shows that after a minute of ineffective attempts to break through the window, most burglars give up their intentions for fear of being caught red-handed. Therefore, the higher the resistance class, the greater the level of protection against burglary.



Without additional security, a burglar has an easy way to our home

Even basic security is not the worst protection against burglary

Increased level of protection against burglary with simple tools. The burglary resistance class increases to RC2 when using a safe double glazing.

# Schüco LivIng – excellent energy balance

The heat stays inside and the cold outside. The seven-chamber window frame profiles provide thermal insulation in a passive construction standard, which until now was impossible to achieve without expensive additional activities.

By replacing old windows with new ones, made in the Schüco LivIng system, we will significantly reduce energy consumption in our home. This not only saves costs, for example, for heating oil, but also reduces harmful CO<sub>2</sub> emissions into the atmosphere. Lower energy consumption means lower heating costs and at the same time our individual contribution to the protection of the environment. Very good thermal insulation

properties make Schüco LivIng windows guarantee users full thermal comfort. Even during the harshest winters, the internal temperature of the window frames is only slightly lower than the room temperature. Thanks to this, undesirable phenomena such as draft or water vapor condensation are effectively prevented. The glass surface retains thermal energy in the room, and at the same time absorbs and transmits valuable solar heat.

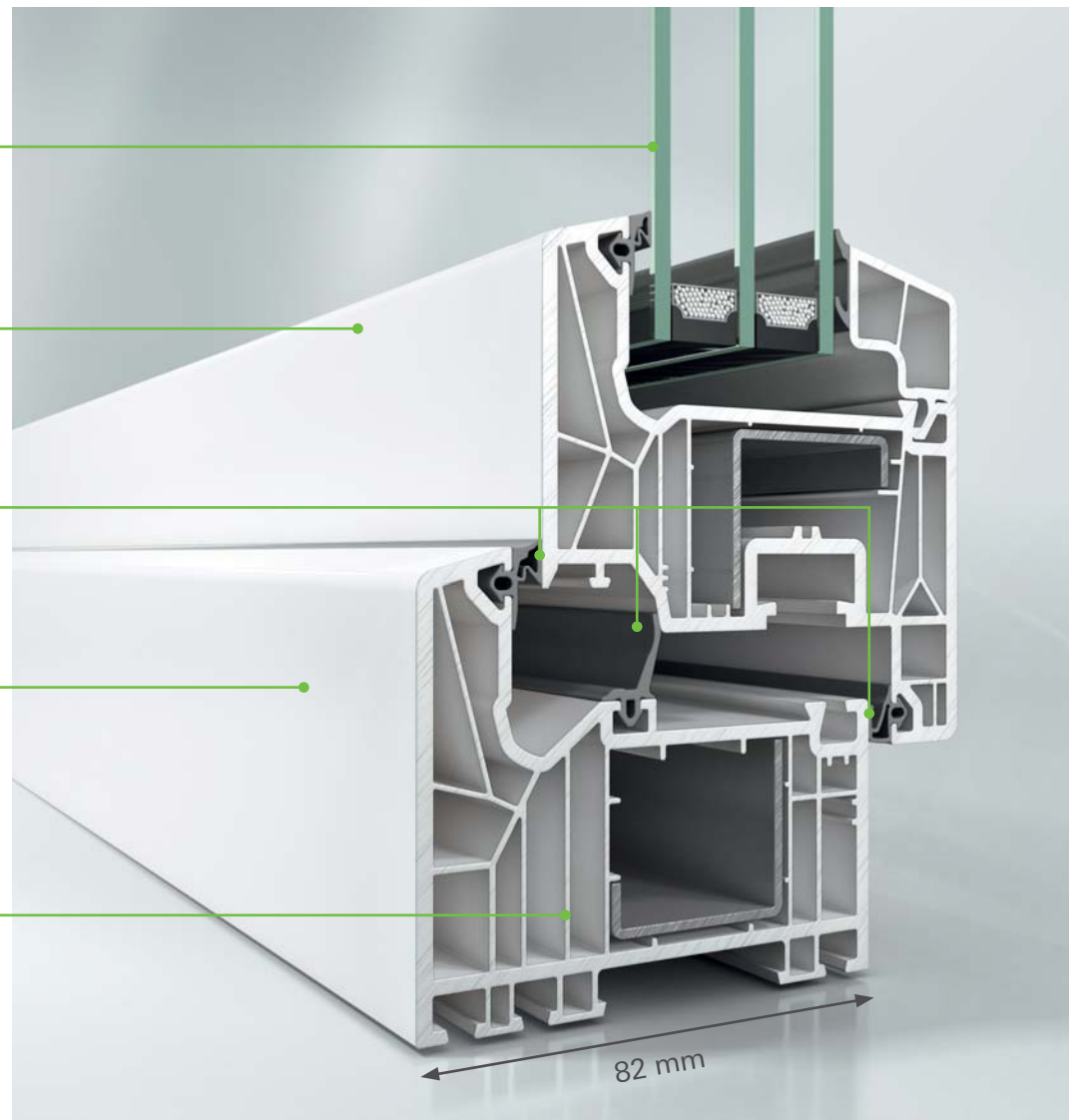
Individual selection of glass, including insulating and functional ones, with a thickness from 24 mm to 52 mm

The classic (Schüco LivIng Classic) or rounded (Schüco LivIng Rondo) form of the wing meets the requirements of modern architecture

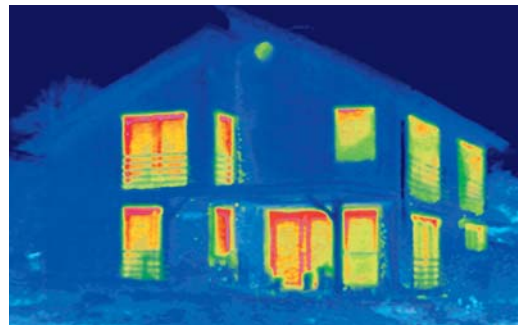
Two (AS series) or three (MD series) sealing planes provide optimal protection against wind, rain and noise

Narrow front profile widths guarantee maximum access of light and additional solar energy

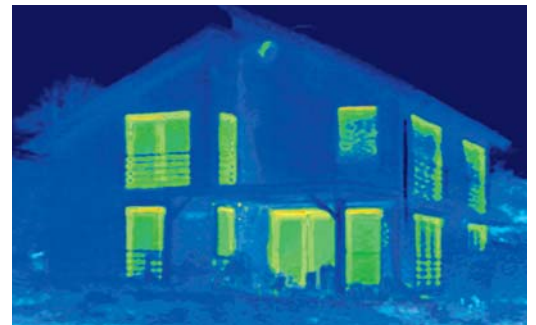
7-chamber profile system with excellent insulating properties. Value of the heat transfer coefficient of U profiles: up to 1.0 W / (m<sup>2</sup>K) (AS series), up to 0.96 W / (m<sup>2</sup>K) (MD series)



Schüco LivIng Classic 82 MD



The thermographic photos clearly show where the thermal energy gets out of control. Red is heat and therefore a significant energy waste.



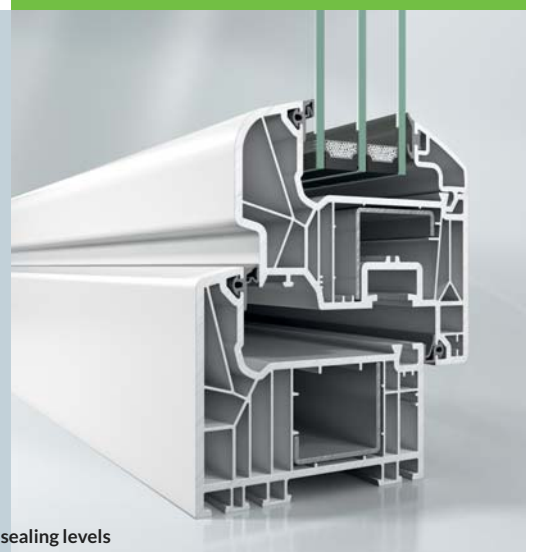
After the professionally carried out replacement of the windows with the Schüco Living window system, the thermographic photo shows a significant energy effect of such an investment: the primary energy loss has been almost completely eliminated

**Schüco Living Classic**  
The classic line of the sash with timeless aesthetics

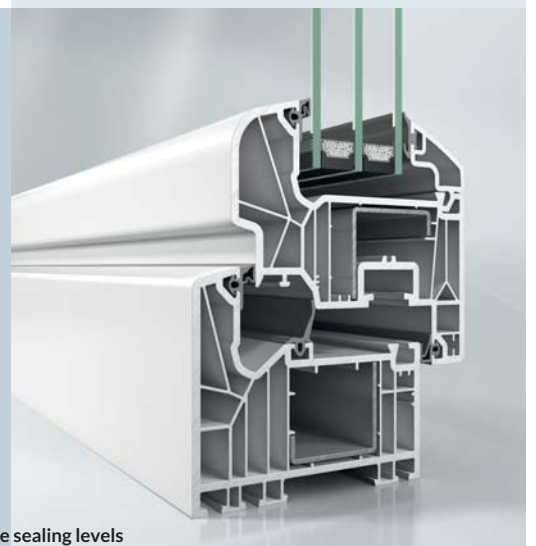


AS series - two sealing levels

**Schüco Living Rondo**  
A traditional rounded line of the sash



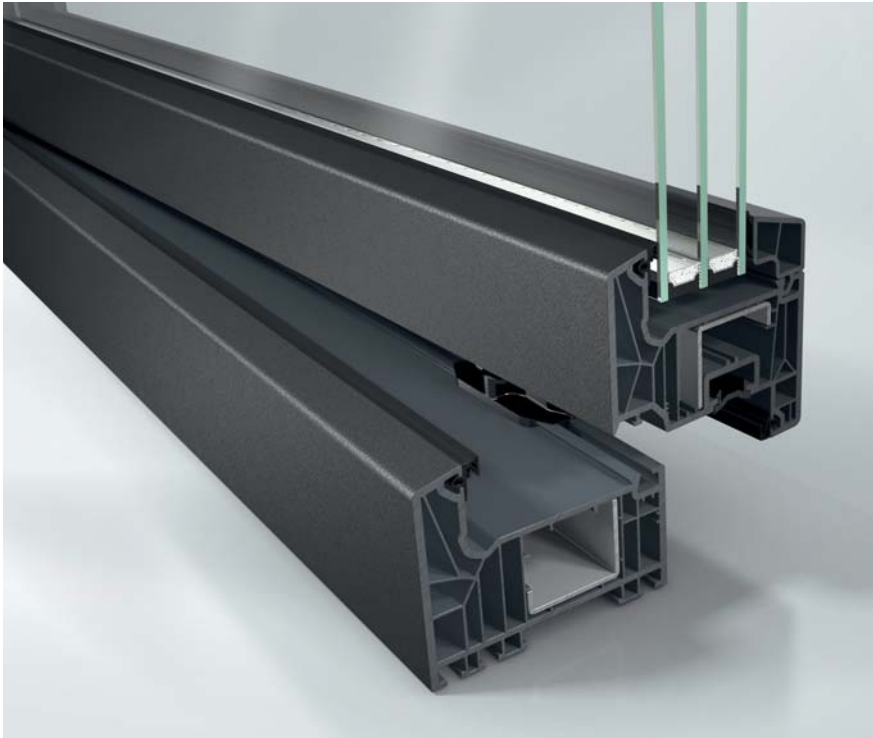
MD series - three sealing levels



System offer: two different styles and two sealing variants

# Schüco LivIng – freedom of individual design

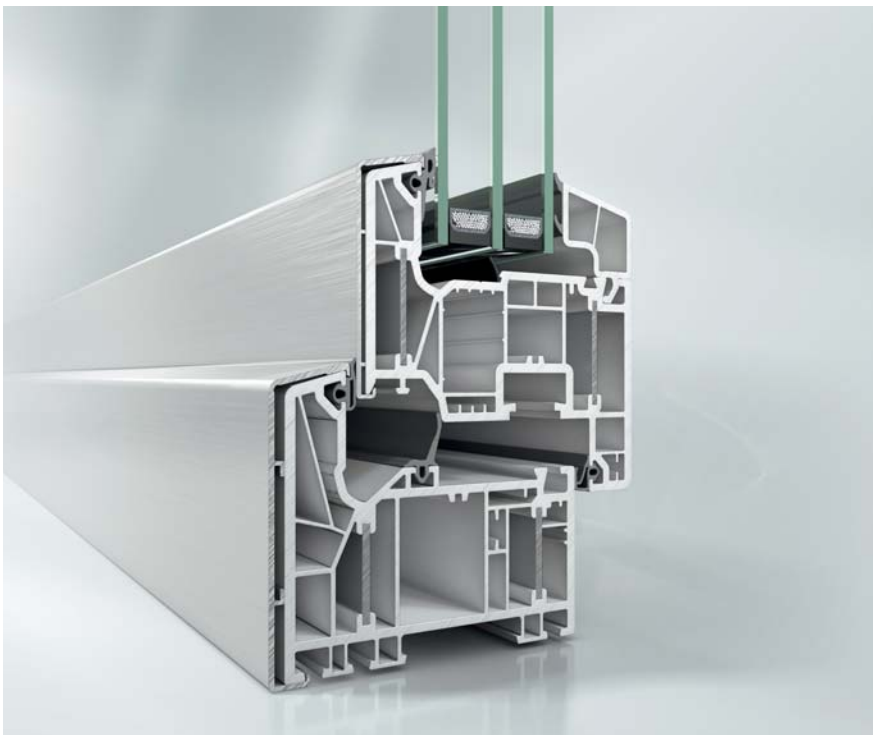
Individualism at a glance: Schüco LivIng windows combine functionality with timeless design. A harmonious combination of various forms and colors will give each home a unique style.



Windows in the Schüco LivIng system can be made of mass-colored profiles, e.g. gray, which is in line with the current trends in architecture. Uniform coloring also ensures a perfect visual effect, even when the window is open.



Choice from a palette of over 200 uniform colors and those imitating the natural look of wooden windows



## Individual design of Schüco LivIng windows

The range of Schüco UnlimitedFinish veneers includes more than 200 uniform and wood-like colors, which can be differentiated from the inside and the outside. The unique aesthetic effect and high durability of the windows are ensured by TopAlu external aluminum covers, which can be obtained in any color from the RAL or RAL EFFECT palette.



Choice from the RAL or RAL EFFECT palette



### Exclusive metallic design

The character of the house is largely shaped by the right choice of colors. In the case of windows from the Schüco Living series, the possibilities in this respect are almost limitless: the exclusive technology of Schüco AutomotiveFinish coatings enables the execution of window and door frames with metallized coatings of the same quality as those used in the automotive industry. The perfect arrangement of Schüco Living windows will be additionally emphasized by handles that match the style of the rooms.



Schüco AutomotiveFinish color palette



The design range of Schüco handles is a response to the highest requirements in terms of appearance and functionality



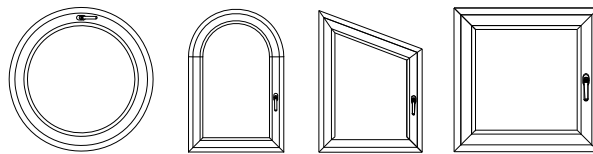
Elegant handles and fittings made of durable materials will make your windows stand out optically



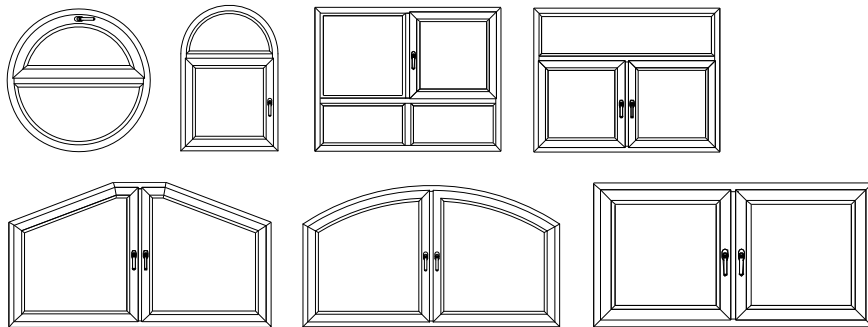
# Wealth of forms of individual facade shaping

The shape of a triangle or an arch, after all, a window does not always have to be rectangular! In the Schüco Living system, windows can be realized according to your own ideas and dreams. Stylish muntin bars or glazing beads will allow you to use additional accents so that our new windows are eye-catching.

## One-divided balcony windows and doors



## Mullioned balcony doors and windows



## influence of different variants of window division on the appearance of the facade



Rectangular high windows without muntin bars optically emphasize transparency



Horizontal muntin bars emphasize the window divisions and optically widen the building



Vertical muntin bars create additional elegant lines for dividing the window surface

# Schüco LivIng – Made in Germany

One of the many arguments in favor of choosing Schüco LivIng windows is their high quality. All Schüco PVC-U window systems are designed and manufactured in Weißenfels, Germany. The material used in them is stabilized with lime and zinc, which are environmentally friendly. It is resistant to light and weather conditions, and is also high impact and retains its shape perfectly, also at high temperatures. Fittings and handles are protected against corrosion. The result: maintenance and costs are kept to a minimum.



An integral element of Schüco's strategy is the demand for 360° sustainable development. It relates to the entire product life cycle - from the birth of its idea to recycling, in line with the Vinyl Plus initiative program in which we participate. We produce ecological, energy-saving products and set new service standards in the industry, supporting our partners in creating solid and durable implementation.

Sustainable development means designing, constructing and operating buildings in such a way that they meet the challenges of the future in every respect. This requires innovative solutions that save natural resources. We put special emphasis on maximizing such advantages of our systems as:

- functionality
- ease of use
- energy efficiency
- environmental friendliness.

Thanks to the Schüco system with PVC-U we contribute to the reduction of CO<sub>2</sub> emissions and the saving of natural resources. All of them can be fully recycled. As part of the cooperation with the Rewindo organization, the dismantled windows are reprocessed and new, high-quality products are produced from the obtained raw materials.

That's not all: we also reduce energy consumption in the production process, for example thanks to energy-efficient machines and sustainable production halls.

## Schüco LivIng



### Designed to meet your expectations

Thanks to Schüco LivIng windows you will make your dream home come true: comfortable, safe and energy-saving. Windows and doors made in the new plastic system provide unlimited design possibilities in terms of shape, color and texture.

Discover the durable and proven quality of Schüco products by visiting one of our partners. You will receive competent advice on:

- thermal and acoustic insulation
- selection of surface finishes and colors
- security systems and additional window equipment

### Schüco Polymer Technologies KG

[www.schueco.de](http://www.schueco.de)

You can find the latest information on the social network:

[www.schueco.de/newsroom](http://www.schueco.de/newsroom)

### Schüco - system solutions for windows, doors and facades

The Schüco Group has its headquarter in Bielefeld. It develops and sells window, door and facade systems. More than 5,400 people worldwide work for the current and future leadership position in the technology and services industry. As a specialist in coatings for residential and commercial buildings, Schüco offers, in addition to innovative products, also consulting and digital solutions at every stage of the construction process - from concept and design to execution and installation. 12,000 partner companies, developers, architects and investors all over the world work with Schüco. The company is active in over 80 countries and achieved a turnover of 1.670 billion euros in 2018.

More information at [www.schueco.pl](http://www.schueco.pl)

# SCHÜCO